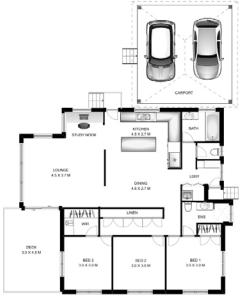


Want to achieve higher commission levels?

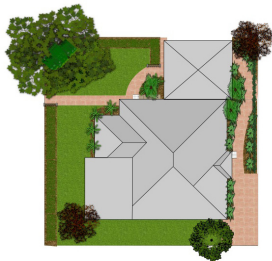
FLOOR PLANS



COLOURED PLANS



SITE PLANS



3D FLOOR PLANS



+ MORE

4 reasons floor plans can help you as an agent to make more money

1 INCREASE YOUR COMMISSION?

- ✓ In a recent survey, agents who used floor plans reported a 26% higher commission levels. (source: estate agents news)

2 MORE PROSPECTIVE BUYERS THROUGH OPENS?

- ✓ 93% of buyers are more than likely to inspect a property with a floor plan. (source: C.A.R Home Buyers survey 2009)

3 REDUCE THE AMOUNT OF TIME YOUR LISTING IS ON THE MARKET?

- ✓ Including floor plans in your marketing campaign has proven to reduced the listing time on the market by up to 50%. (source: C.A.R Home Buyers survey 2009)

4 BOOST YOUR REFERRALS?

- ✓ 81% of vendors believe that professionally produced plans will help them sell their property faster. (source: estate agents news)

HAVE WE GOT YOUR INTEREST?

We can help you improve your end sales result?
 ph: 0409 649 841 web: interiordivine.com.au

1

property

7 different ways to market

WHAT DO WE OFFER?

We are not photographers pretending to be a drafter, we are qualified Interior Designers who happen to have a lifetime of experience within the real estate industry. We understand what is required to help market your property and are therefore able to offer you a wide variety of options to highlight each individual properties needs and also suit your agency brand.

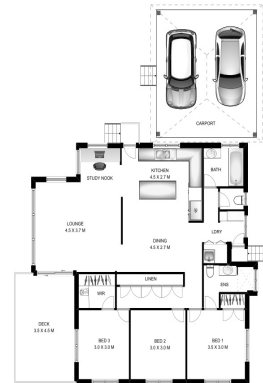
WHICH PLAN TO CHOOSE?

Floor plans are regarded as one of the most important requirements as the online property buyer is able to view the entire property layout from this information. The floor plan will also give the buyer an approximate indication of the entire property size plus individual room sizes. But the question is, which of the following is going to help increase your commission? Well that depends on your listings and your agency branding. The choice is yours.

BLACK & WHITE FLOOR PLAN

In most cases floor plans are still printed on paper and predominately in black and white and for good reason. Black and White plans are more "cleaner" and help with readability, most importantly, they save you money on printing cost.

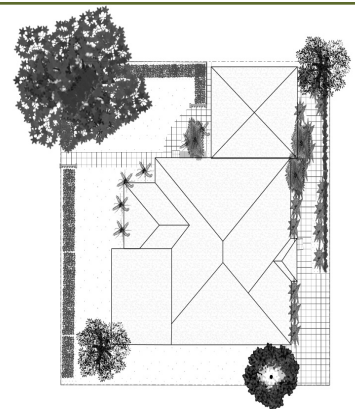
| | |
|------------------------|-------|
| 1 - 2 Bedroom | \$___ |
| 3 - 4 Bedroom | \$___ |
| 5 - 6 Bedroom | \$___ |
| Large Homes (600sqm +) | \$___ |



BLACK & WHITE SITE PLAN

Site plans feature a home's floor plan relative to its grounds or grounds. If you're going to use a black and white floor plan, then we will produce a site plan to match.

| | |
|---------------------|--|
| Less than 1000 sqm | \$___ (when combined with a floor plan or \$___) |
| 1001sqm - 2000 sqm | \$___ (when combined with a floor plan or \$___) |
| 2001 sqm - 4000 sqm | \$___ (when combined with a floor plan or \$___) |
| Acreage / Estates | ___ |



W

e can help you improve your end sales result?

ph: 0409 649 841

web: interiordivine.com.au

1

property

7 different ways to market

For an extra \$___ add some colour into your marketing campaign.

COLOURED FLOOR PLAN

Color floor-plans show that you care about selling your client's listing; they add a premium, high value look to any listing and can be used in your brochures, email and websites.

1 - 2 Bedroom \$___

3 - 4 Bedroom \$___

5 - 6 Bedroom \$___

Large Homes (600sqm +) \$___



COLOURED SITE PLAN

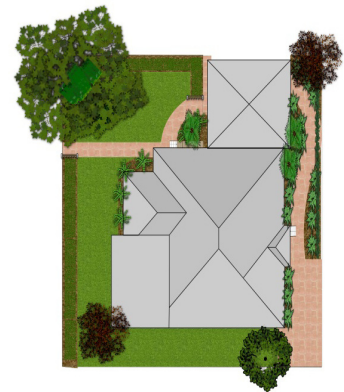
Site plans feature a home's floor plan relative to its gardens or grounds, including prominent external features. These plans are perfect for showcasing large blocks, sub-division potential or multiple dwellings.

Less than 1000 sqm \$___ (when combined with a floor plan or \$___)

1001sqm - 2000 sqm \$___ (when combined with a floor plan or \$___)

2001 sqm - 4000 sqm \$___ (when combined with a floor plan or \$___)

Acerage / Estates ___



FURNITURE LAYOUT

Want to showcase a new development or vacant property. We can also embed the floor plan on your website and allow buyers to explore the floor plan, decorate it, and get a real feel for their potential new home.

1 - 2 Bedroom \$___

3 - 4 Bedroom \$___

5 - 6 Bedroom \$___

Large Homes (600sqm +) \$___



W

e can help you improve your end sales result?

ph: 0409 649 841

web: interiordivine.com.au

1 property

7 different ways to market

3D FLOOR PLAN

The most sophisticated plans, 3D artist impressions, are generated from details building plans by special 3D software, and used for bringing yet-to-be-built properties to life in a highly realistic fashion.

1 - 2 Bedroom \$___

3 - 4 Bedroom \$___

5 - 6 Bedroom \$___

Large Homes (600sqm +) \$___



3D WALKTHROUGHS

BLA BLA BLA

1 - 2 Bedroom \$___

3 - 4 Bedroom \$___

5 - 6 Bedroom \$___

Large Homes (600sqm +) \$___

HYPER LINK
TO WALK THROUGH
+ PICTURE

W

e can help you improve your end sales result?

ph: 0409 649 841

web: interiordivine.com.au

1

property

7 different ways to market

For an extra \$_____ per month we include an interactive plans to everyone of your agencies floor plans

INTERACTIVE FLOOR PLANS

Interactive floor plans are designed to engage buyers with your profesional photography and a realistic plan of your listing. We know that your website is the centre of your online marketing strategy, so we can embed every floor plan on your website and this interactiviy enhances the viewing experience and motivates buyers to take action.

1 2D Floor Plans

- ✓ Allow buyers to view plans on their mobile devices in either choice of black and white or coloured.
- ✓ Allow potential buyers to explore the floor plan, decorate it, and get a real feel for their new home

2 Interactive Floor Plans

- ✓ Compliment your professional photograhpy and allow buyers to virtually inspect their property 24/7.

3 Agency Branding

- ✓ Brand your Interactive Floor Plans in your company's own style, adding your own logo and company colours.

It's more than a floor plan. We this subscriptions you can engage your customers with a richer information. You can add all the detail needed to best represent your listing.

hyperlink <http://pl.an/x25foj>

Book a Floor Plan online before the end of October and we will include a site plan for Free!

Online calender booking → www.interiordivine.com.au → **Book Now!**